

Sennetech

SCT-1030

**CAMERA CONTROL CODE TRANSLATOR
PELCO RS-422 to BOSCH BIPHASE Ver 2.2**

www.sennetech.net

Sennetech, Inc. 6455 W. Bath Rd. Perry, MI 48872 U.S.A. Ph (517) 675-1150 Fax(517) 675-1151

PRODUCT DESCRIPTION

The SCT-1030 is a Pelco to Bosch control code translator designed to permit control of Bosch cameras from Pelco controllers. It receives Pelco RS-422 commands and transmits the appropriate commands in Bosch Allegiant biphase format. There are four independent biphase outputs.

Internal configuration switches set the code translator to work with either Pelco "D" code at 2400 baud only, or "P" code at either 4800 baud or 9600 baud. The biphase output can be limited to fixed speed only commands for compatibility with older Burle receivers.

Bosch aux and preset commands up to 1023 can be sent using selected sequences of Pelco aux and preset commands.

Input and output connections are made with mating screw terminal connectors. Front panel indicate display status of power, receive, transmit, and program mode.

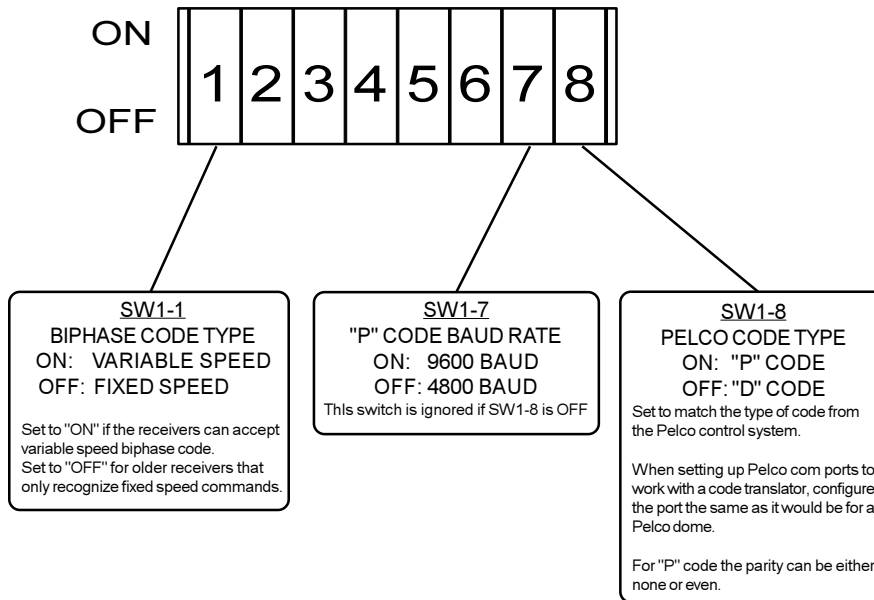
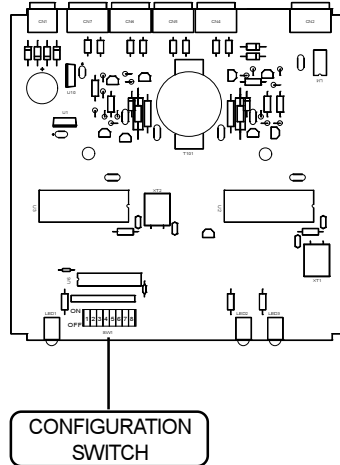
There is an optional 19" rack mount panel (one rack unit high).

SPECIFICATIONS

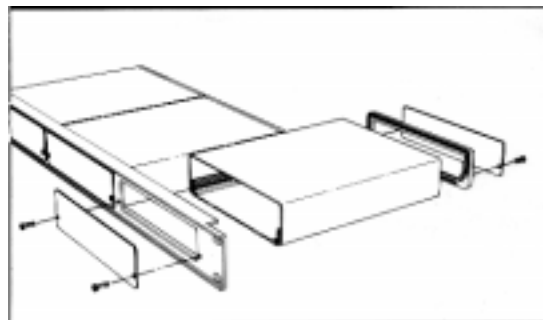
SIZE:	5.57"W x 1.52H x 5.45D
WEIGHT:	1.5 lb
POWER:	9Volt to 15Volt AC or DC at 75ma
INDICATORS:	Front panel LEDs: Power, Rx, Tx, & Pgm
PELCO RS-422 INPUT:	(1) mating 3-pin screw terminal connector
BIPHASE OUTPUTS:	(4) mating 3-pin Screw terminal connectors

SETTING THE SWITCHES

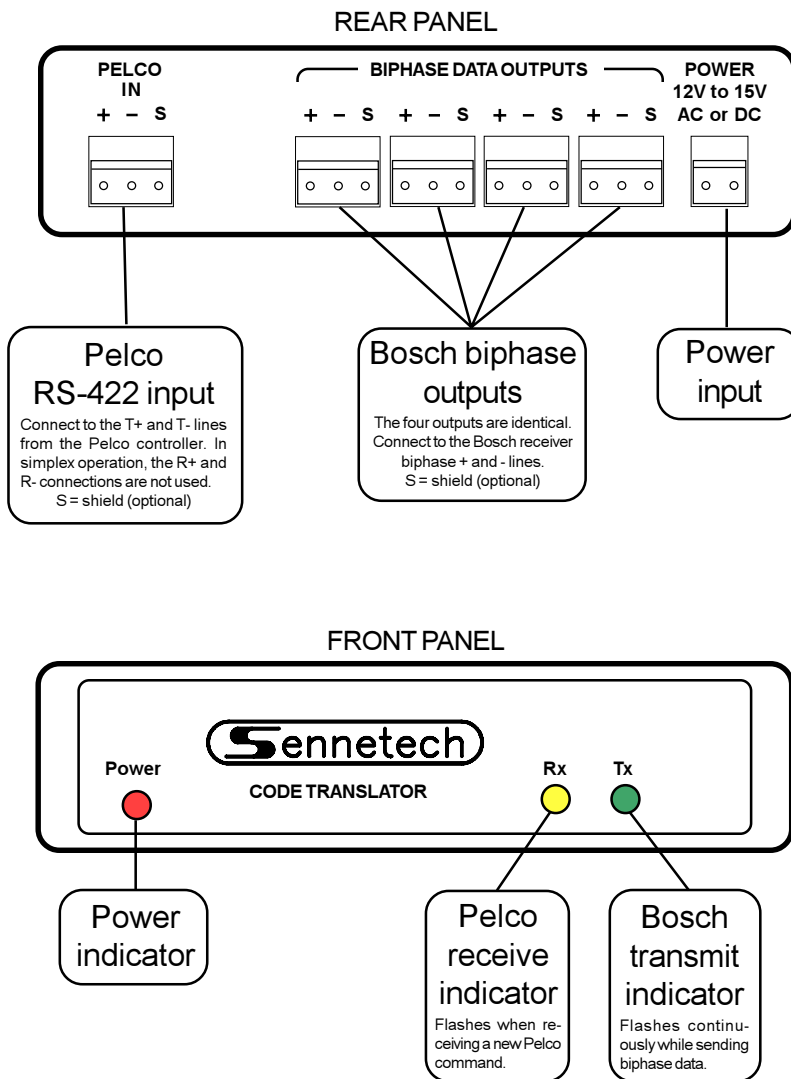
To set the configuration switches, remove the back panel which is secured by two screws. Then slide the cover back to expose the switches. The switches can be changed with power applied and the changes take effect immediately.



To install the case on the rack mount frame, remove the front panel and the plastic bezel. The rack mount frame takes the place of the bezel as shown below.



INSTALLATION



The Rx indicator will flash whenever there is data from the Pelco controller. If the input lines have reversed polarity, the Rx indicator will be on solidly. Biphasse code is repeating so the Tx indicator will continue to flash while the camera is moving.

If you have Rx but no Tx, possible causes are:

- The Pelco code is not camera control code.

- The code translator configuration doesn't match the code type from the Pelco controller.

Check the Pelco com port setup. If changes are made, you may have to cycle the power on the Pelco system before the changes become effective.

If the code translator is sending data and doesn't get a follow up Pelco command in about 12 seconds, it will time out and quit sending that stream of data.

OPERATION

Pelco pan, tilt, zoom, focus, and iris commands are converted to the equivalent Bosch commands.

Pelco [Aux7][On] sends Bosch [On][1] which Autodomes interpret as Autoscan without limits.
Pelco [Aux8][On] sends Bosch [On][2] which Autodomes interpret as Autopan between limits.

Pelco [Program Pattern] sends Bosch [On][100]: Record A.
Pelco [Stop Programming] sends Bosch [Off][100]: End Recording A.
Pelco [Run Pattern] sends Bosch [On][50]: Repeat recorded sequence A.

Version 2 differs from earlier versions for sending preset and aux commands. Preset and aux numbers up to 1023 can be sent. Since Pelco supports 99 presets and 8 aux commands, an alternate method is used to send these high numbers.

Pelco [Pgm Preset] & [Preset] correspond to Bosch [Set] & [Shot] commands.

Preset Commands

The first 99 preset commands can be commanded directly from the Pelco keyboard. To send higher numbers, a base number is first stored in memory, then a number from 1~99 is added to that base number to determine the actual preset number.

The base numbers are multiples of 100 or odd multiples of 50.

To store a base number, press and release [Aux4] then follow with a [Preset] or [Pgm Preset] [40~59] using the following table.

[Preset][41] stores 100	[Preset][50] stores 50
[Preset][42] stores 200	[Preset][51] stores 150
[Preset][43] stores 300	[Preset][52] stores 250
[Preset][44] stores 400	[Preset][53] stores 350
[Preset][45] stores 500	[Preset][54] stores 450
[Preset][46] stores 600	[Preset][55] stores 550
[Preset][47] stores 700	[Preset][56] stores 650
[Preset][48] stores 800	[Preset][57] stores 750
[Preset][49] stores 900	[Preset][58] stores 850
	[Preset][59] stores 950

If any command other than one from the table is sent following [Aux4], no number is stored.

Once a base number is stored, if the very next command to that camera is [Preset] or [Pgm Preset] [1~99], that number will immediately be added to the base number and sent. At this point, the base number is cleared so the entire process must be used to send another high preset.

Example

To send the Bosch [Set][100] command, use the following sequence:

[Aux4] (Prepare to store a base number)
[Preset][50] (Store the base number 50)
[Pgm Preset][50] (Send the Bosch [Set][100] command <50+50>)

To send the Bosch [Shot][999] command, use the following sequence:

[Aux4] (Prepare to store a base number)
[Preset][59] (Store the base number 950)
[Preset][49] (Send the Bosch [Shot][999] command <950+49>)

Auxiliary Command

Because Pelco has only eight Aux commands, they are not used to send Bosch [On]/[Off] commands directly. First an Aux# must be stored. Then pressing [Aux1] will send [Off#] and pressing [Aux2] will send [On#]. The Pelco Aux keys may be programmed to alternate Aux On & Aux Off commands each time the key is pressed or they may send Aux On when pressed & Aux Off when released. The code translator will accept either, just press and release each time.

To store an Aux# number, press [Aux3] followed by [Preset][1~99]. The Preset number will be stored and that is the number that will be sent by pressing [Aux1] or [Aux2]. If no aux number has been stored, no commands will be sent. The aux number will stay in memory as long as only [Aux1] or [Aux2] is sent to that camera. If any other command is sent to that camera, the stored aux number will be cleared.

Example

To send the Bosch [On] or [Off] [14] command, (used by Autodomes to change autopan speed),

[Aux3]	(Prepare to store an aux number)
[Preset][14]	(Store the aux number 14)
[Aux2]	(Send the Bosch [On][14] command - increase speed)
[Aux1]	(Send the Bosch [Off][14] command - decrease speed)

(These commands can be repeated until the aux number is cleared.)

Auxiliary Commands Above 99

The above method works for numbers up to 99. For higher numbers, a base number can first be stored which will be added to the Preset number to determine the stored aux number. The base number is stored the same way as it is for high presets, ie [Aux4] plus [Preset][1~99]. Then press [Aux3] to signal the code translator that the ensuing [Preset][1~99] is to store an aux number rather than sending a high preset number.

Example

To send the Bosch [On] or [Off] [900] command,

[Aux4]	(Prepare to store a base number)
[Preset][58]	(Store the base number 850)
[Aux3]	(Prepare to store an aux number)
[Preset][50]	(Store the aux number 900 <850+50>)
[Aux2]	(Send the Bosch [On][900] command)
[Aux1]	(Send the Bosch [Off][900] command)

(These commands can be repeated until the aux number is cleared.)

These stored numbers are only applied to commands for the camera address that stored the number. If a base number has been stored for camera 23, for example, any other camera can be sent a normal preset.

Only one aux number is stored at a time. If an operator has stored an aux number for camera 23, for example, and then another operator sends the storing sequence for camera 7, the aux number for camera 23 is cleared and a new one is stored for camera 7.

For Bosch functions that use Aux numbers to change values, the key may have to be pressed repeatedly. If the Tx indicator does not flash when an [Aux1] or [Aux2] command is sent, there is no aux number stored for that camera number.

To summarize, press [Aux4] to store a base number for high values. Press [Aux3] to store an Aux# then follow with [Aux1] to send Bosch [Off][#] and [Aux2] to send Bosch [On][#].

